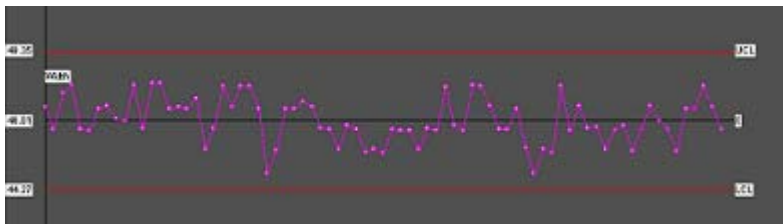
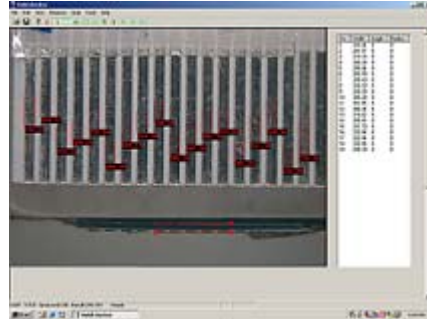


COMPUTER VIDEO MEASUREMENT SYSTEM

CVM-FFC : FOR FLEXIBLE FLAT CABLE AND SMALL SCREW



Zoom	Obj size (mm)	Accuracy (micron)
0.65X	9	38
1X	6	24
2X	3	12
3X	2	8
4X	1.5	6
4.5X	1.3	5
ANGLE	0-180 +/- 0.1 DEG	

Features :

1. The system uses high quality color CCD and frame grabber to capture superb s-video images. This assures accurate and reliable measurement results.
2. It uses a movable, rotary and adjustable parallel line pair for fast linewidth measurement.
3. It uses a movable and rotary angled line pair for fast angle measurement.
4. It uses a movable and adjustable circle for fast radius measurement.
5. The measured data is displayed live in a report table and is editable. The SPC control chart of the measured data can be calculated and displayed or printed whenever needed. All measured data can be saved and re-loaded.
6. The color of the measurement tools can be selected. The measured values and the measurement tools can be annotated to the image and saved.
7. The image being measured can be enlarged, saved and re-loaded.

SYSTEM CONFIGURATION

1. C-mount zoom lens with adjustable LED ring light illumination. Continuous zoom range from 0.65X to 4.5X. Rigid stand with focus control and 180 X 160 mm X-Y movement table of 70 X 45 mm travel range.
2. Matrox PCI frame grabber with s-video input, Sentech color CCD camera with s-video output. Optional NIST calibration scale.
3. PC with 2GHZ or higher CPU, 256MB DDR RAM, 40G or higher hard disk, CD-ROM and floppy drives. Windows XP.
4. Windows software with LINEWIDTH, ANGLE and RADIUS measurement and SPC control chart output. Image capture and save.